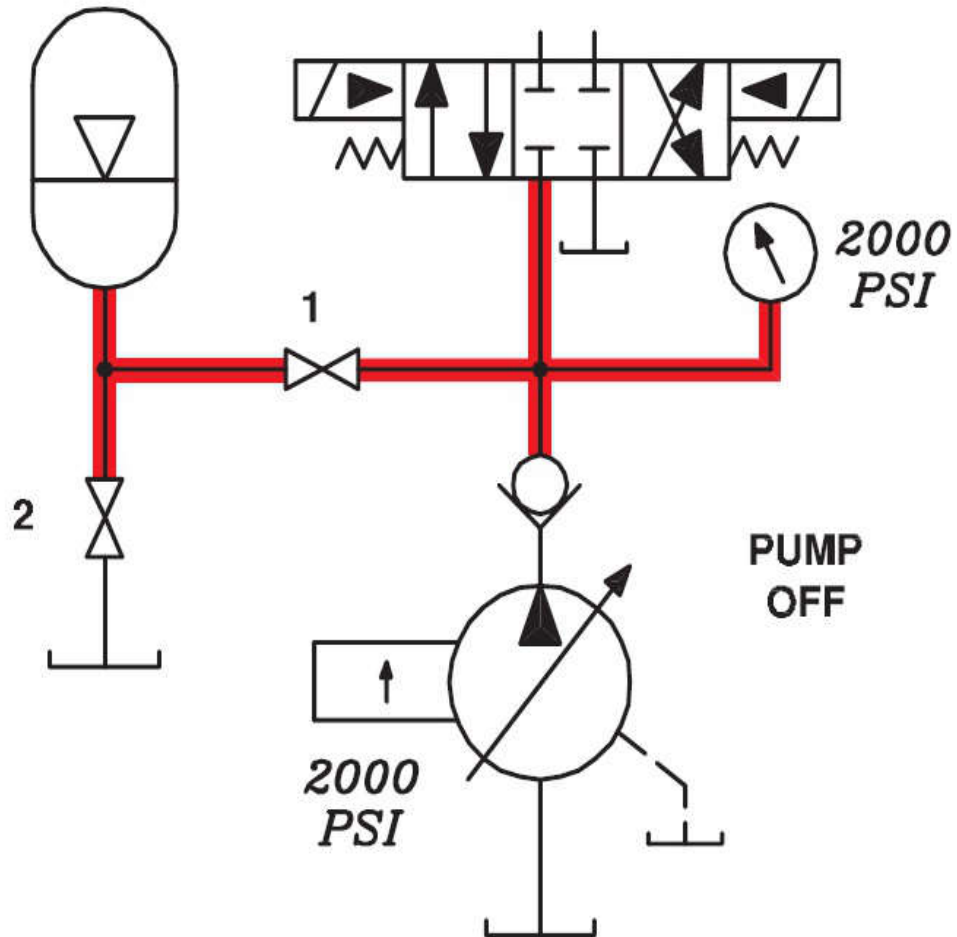


Checking the Nitrogen Pre-charge Hydraulically

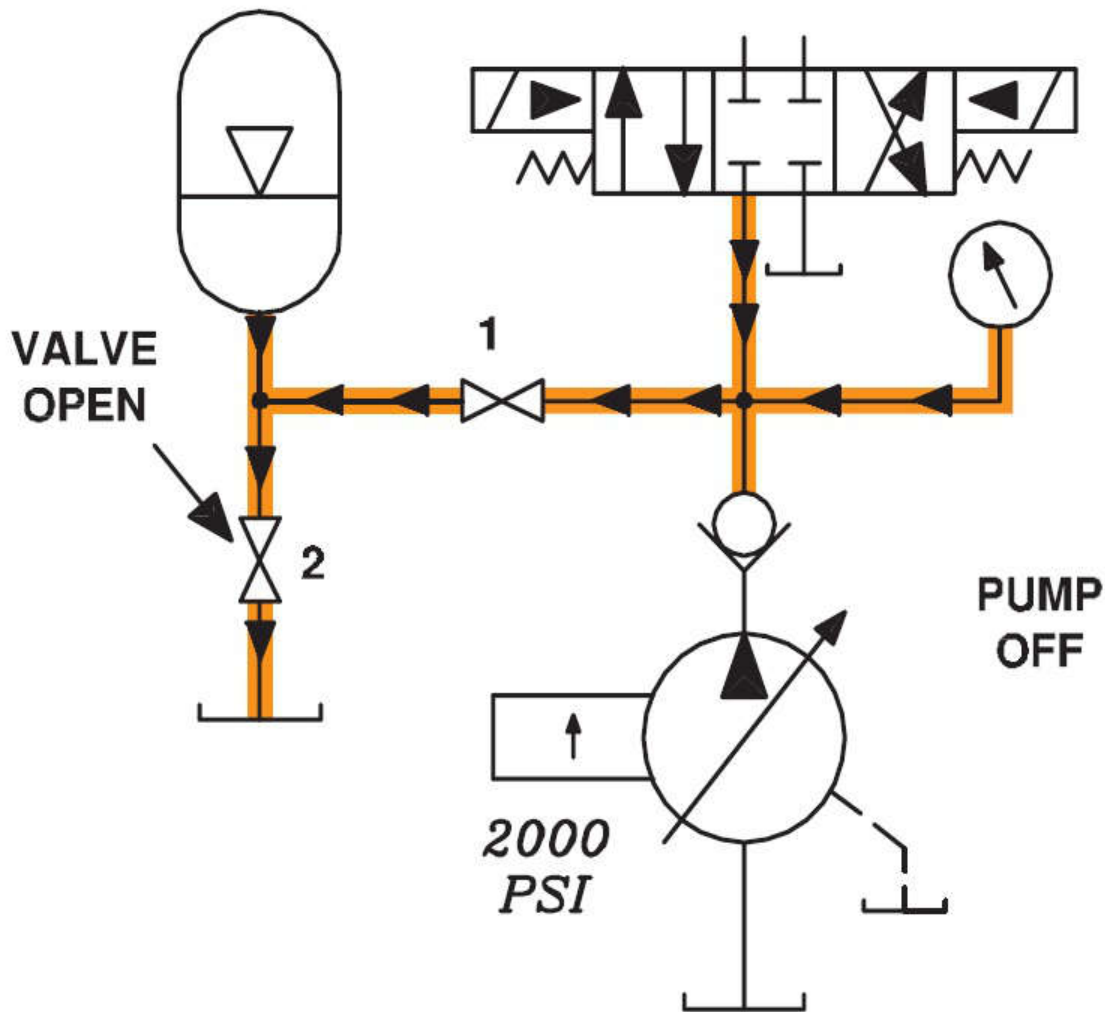
Written By GPM Hydraulic Consulting Inc.

*2000 PSI
PRECHARGE*



Drawing 1

Instead of attaching the charging rig for checking the pre-charge, a hydraulic method is available. When the pump is turned off, pressure is locked in the system.



Drawing 2

Open the No. 2 manual dump valve a small amount. The pressure in the system will slowly drop. The pressure will drop to a point, then rapidly 0 PSI. The pressure that it rapidly drops to 0 is the pre-charge pressure.

Extracted by [Gustavo Zamora*](#), for gruasytransportes.wordpress.com

Download this post in English language in pdf format at:

Sources:

WhatYouDontKnowAboutAccumulatorsCanKillYou.pdf at gpmhydraulic.com
gruasytransportes.wordpress.com

(* Gustavo Zamora is a cranes expert. He lives and works at Buenos Aires (Argentina).

Tags: Checking the Nitrogen Pre-charge Hydraulically (gz7), Cómo comprobar hidráulicamente la precarga de nitrógeno (gz7), hydraulics tech bulletin hoses to nowhere (gz7),

You can reproduce previously published material as a quotation, and the source of the quotation must be cited as <https://gruasytransportes.wordpress.com>